

## 70-640 Real Practice-Lab for configuring Windows Server 2008 Active Directory

The 70-640 Real Practice-Lab will provide you the necessary platform to gain hands on skills in Windows Server 2008 R2 ADDS. By completing the lab tasks you will improve your practical skills in DNS for Active Directory, configuring Active Directory, Active Directory roles & services, maintaining Active Directory objects and Active Directory Certificate Services. Becoming proficient in these tasks will also help you understand the objectives and competencies required by the MCTS: Windows Server 2008 Active Directory, Configuring certification exam.

### PRACTICE-LABS GUIDE

## Exercise 1 – Automate creation of Active Directory accounts

---

In this exercise you will perform the tasks required to automatically create AD accounts. Please refer to your course material or <http://technet.microsoft.com/en-us/library/bb727091.aspx> [Microsoft Technet] to gain an understanding of installing this process.

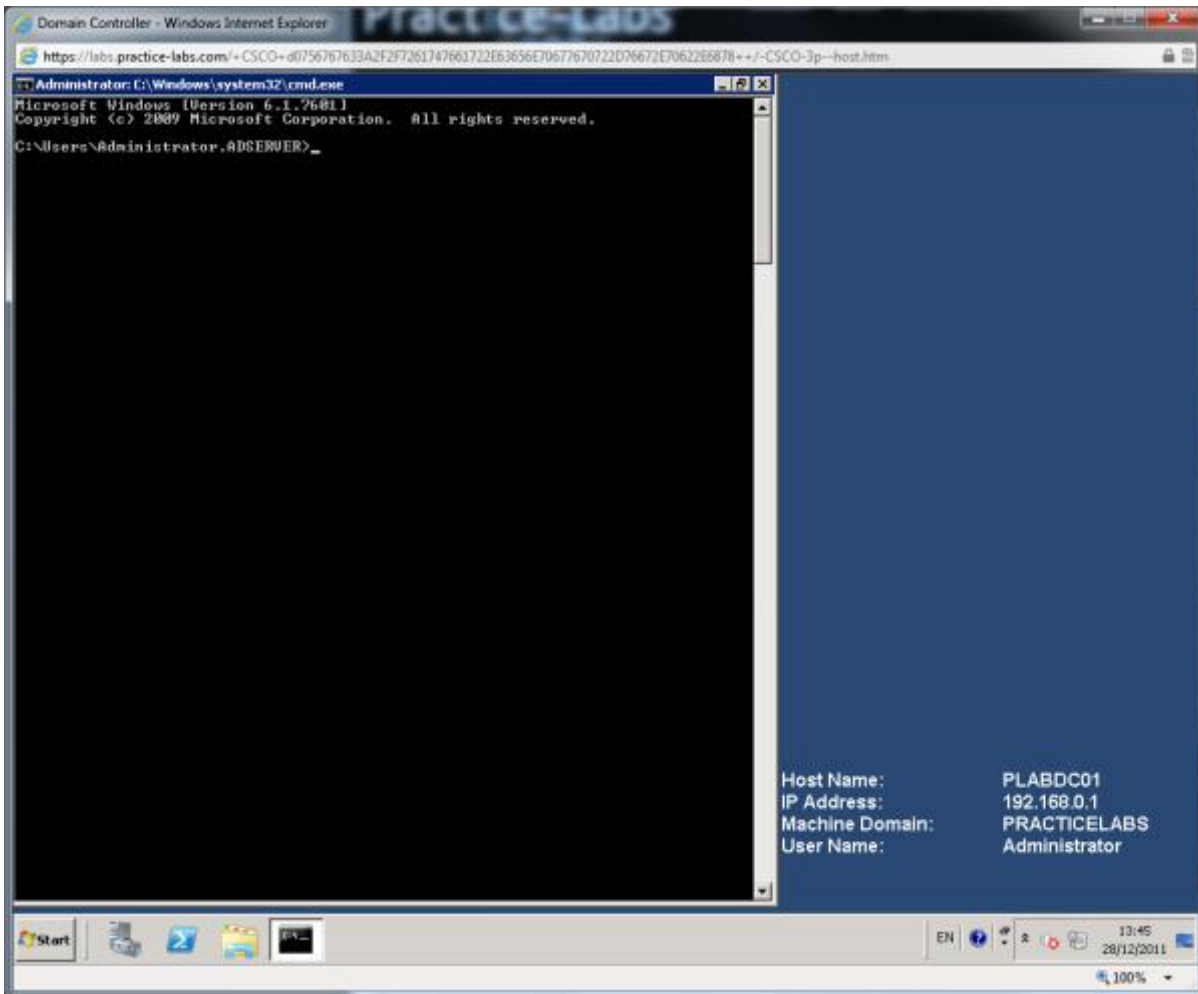
*In this exercise you will be required to Power On and connect to the following servers from your Practice-Lab application:*

- **Domain Controller**
- **Domain Server**
- **Standalone Server**

*If you are having difficulty connecting to your Practice-Lab device please refer to the <http://www.practice-labs.com/help.aspx> help pages or watch our connection video at <http://www.practice-labs.com/files/videos/site-tutorials/accessing-a-practice-lab.aspx> video tutorial.*

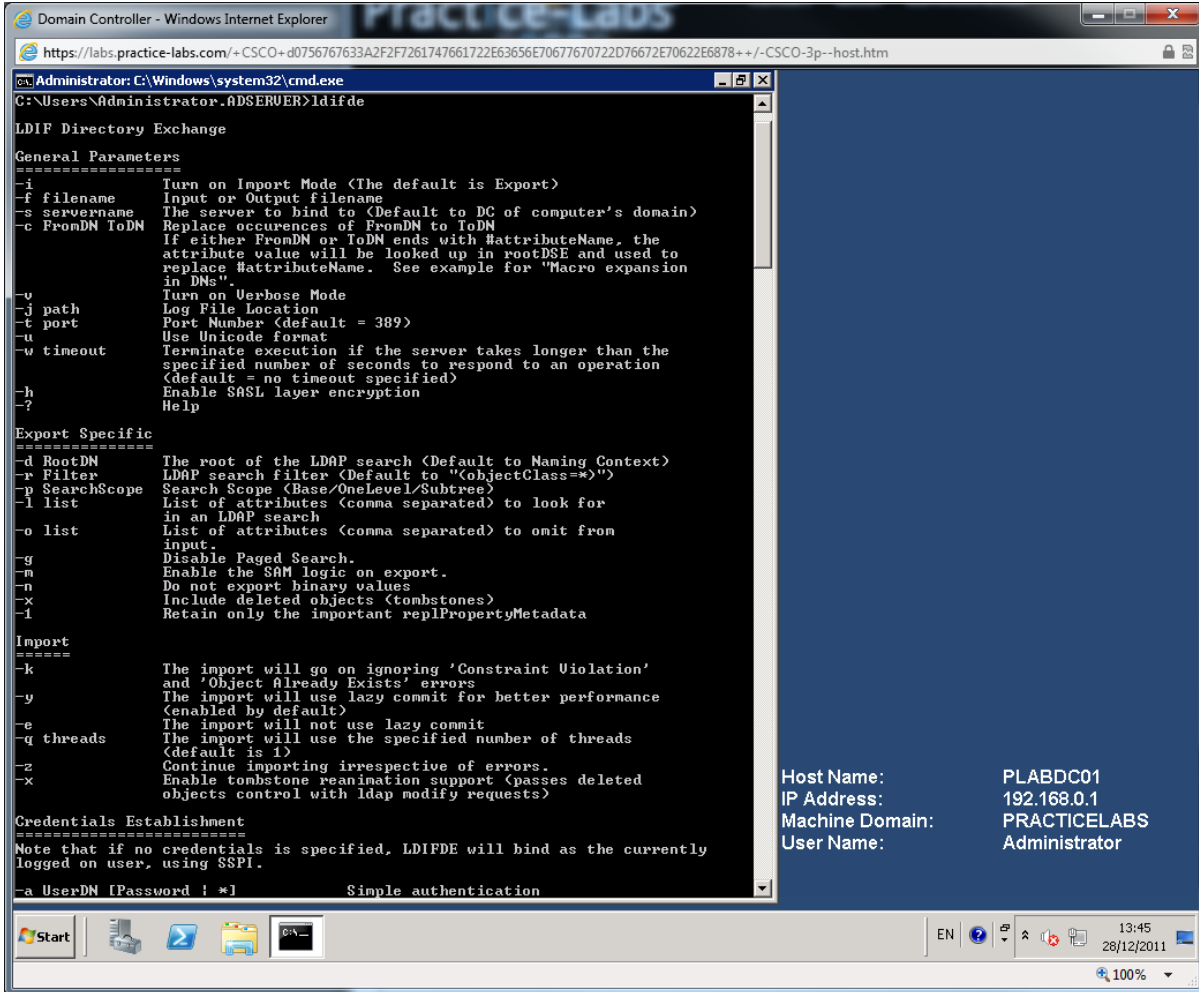
### Step 1

Once you have powered on the Domain Controller, **click connect and** open a command prompt from the start menu or type in **cmd** from the **run** or **search all programs and files** utilities.



### Step 2

From the command prompt type **ldifde** to view the options available for this command.



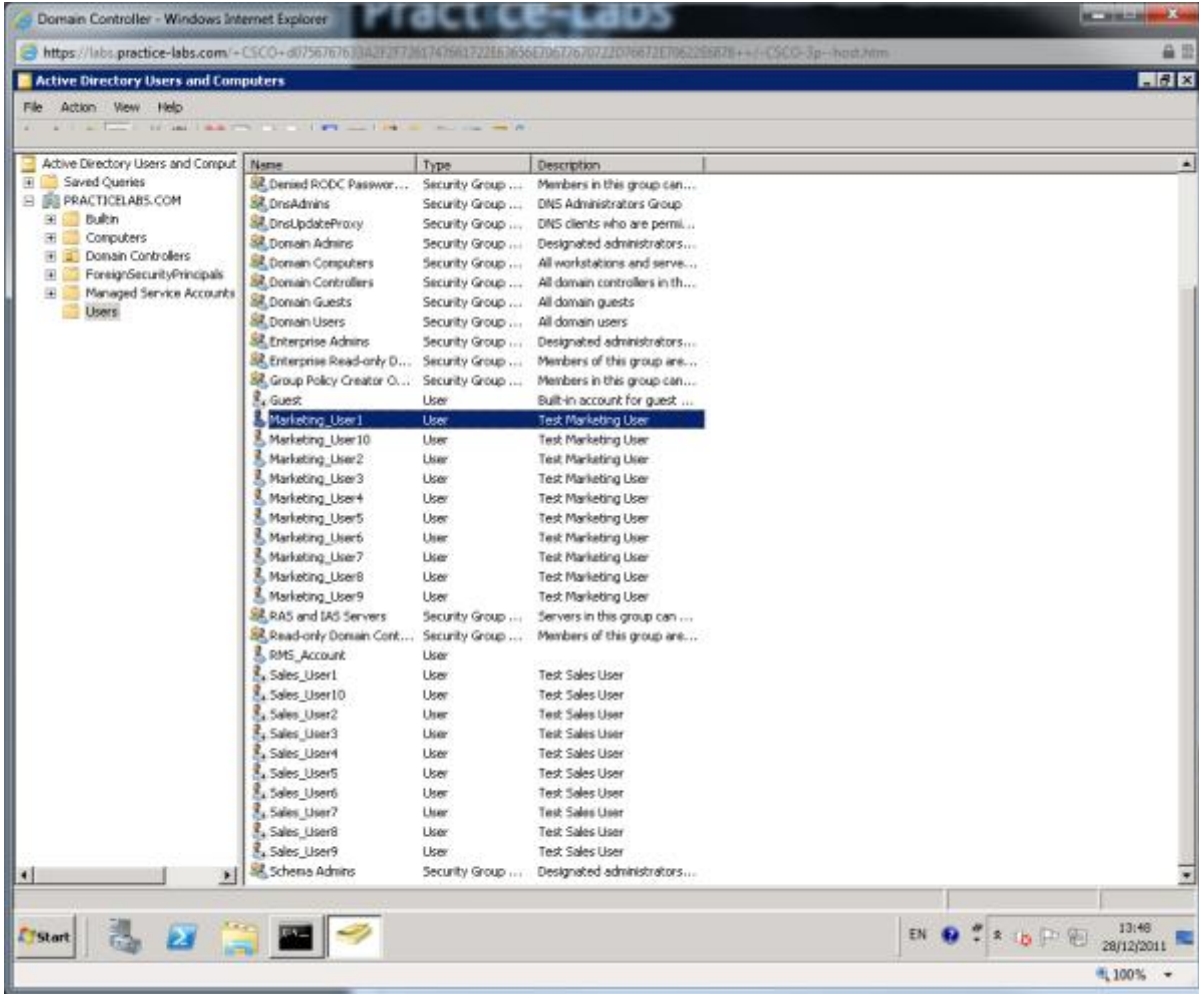
You can create your own import file or alternatively import the sample **.ldf** files from the **C:\Samples** directory.

View the sample files in order to see the syntax required. To execute the sample scripts change directory in the command prompt to C:\Samples and run the following commands:

```
ldifde -i -f marketing_users.ldf
```

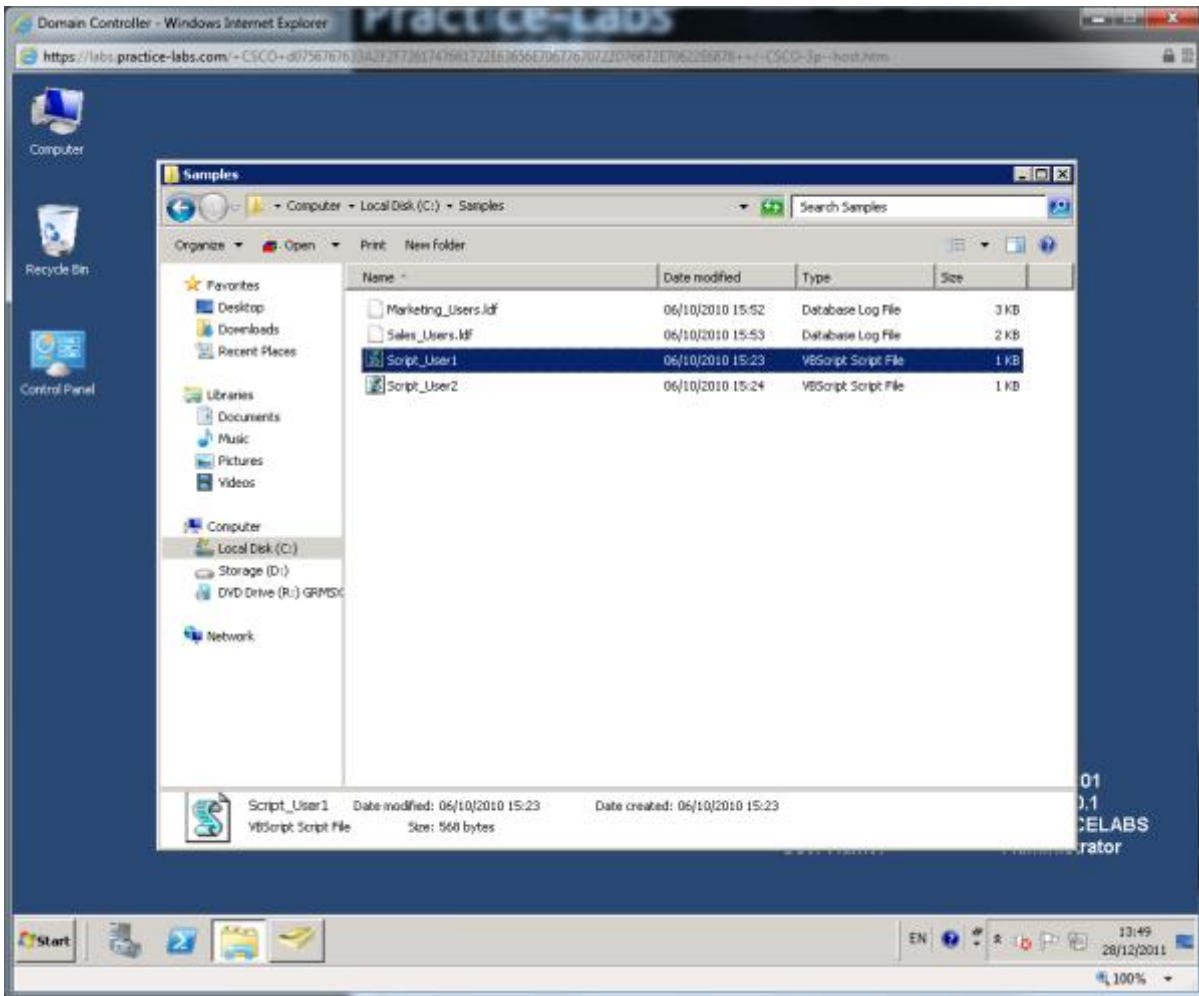
```
ldifde -i -f sales_users.ldf
```





### Step 3

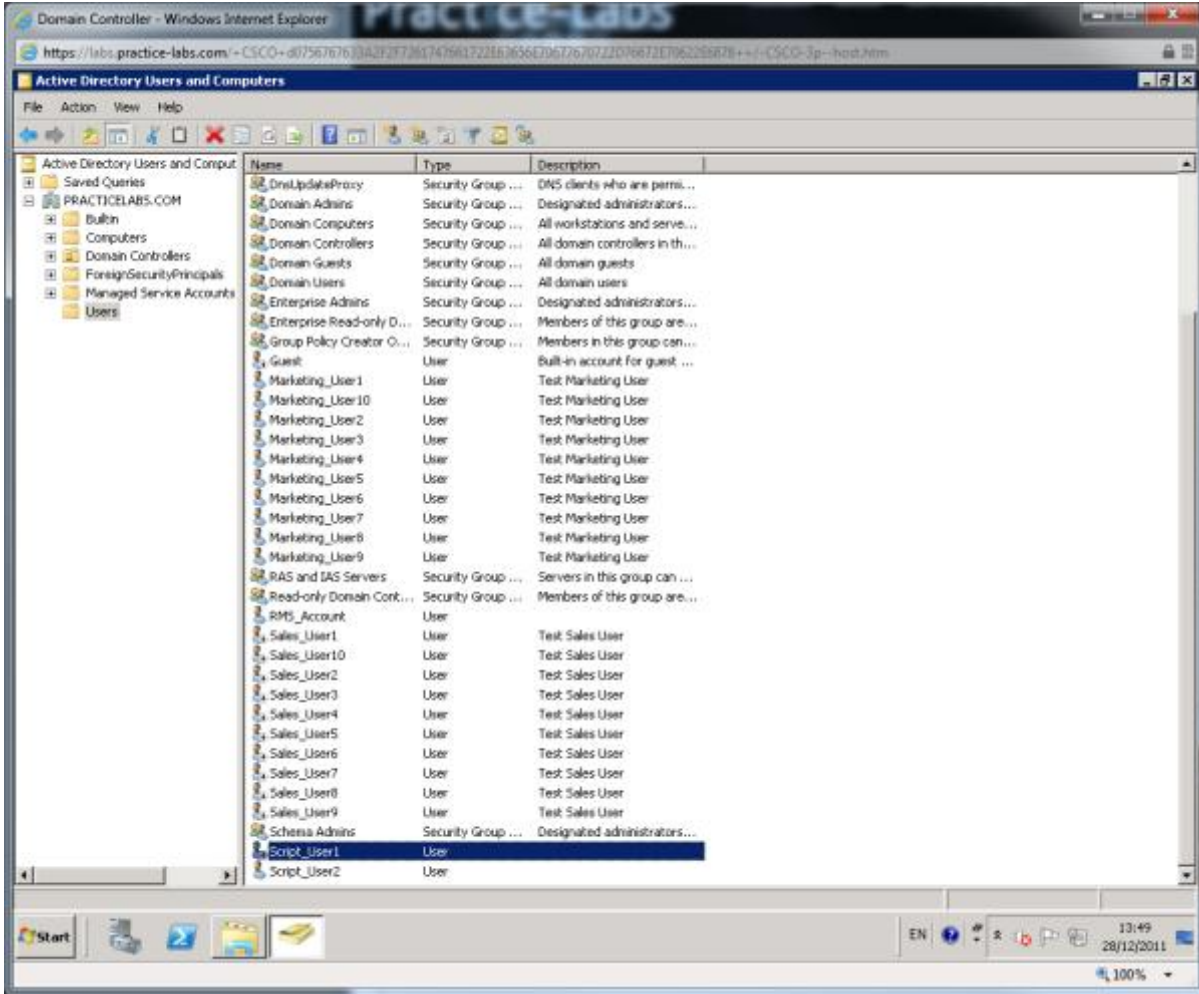
Create a simple VB script to create users or alternatively view the sample **.vbs** scripts from **C:\Samples** directory. View the sample files in order to see the syntax required. To execute the sample scripts open Windows Explorer and browse to **C:\Samples** and double click on the following scripts:



*Script\_User1*

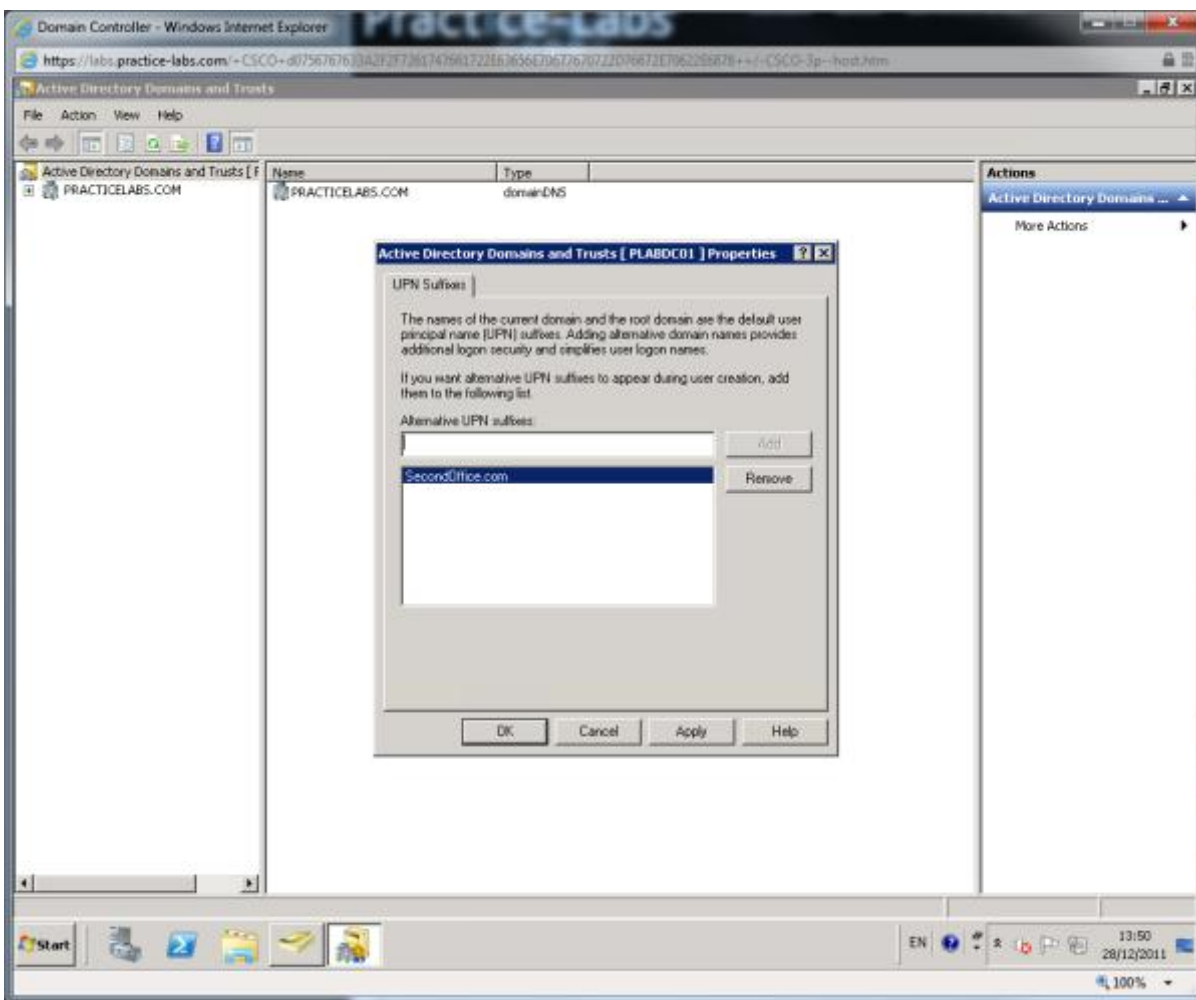
*Script\_User2*

When the scripts have completed, view the **User OU** in **Active Directory User and Computers** to ensure the **Script\_User1** and **Script\_User2** user accounts have been created. These scripts can be edited to include different user attributes during creation.



### Step 4

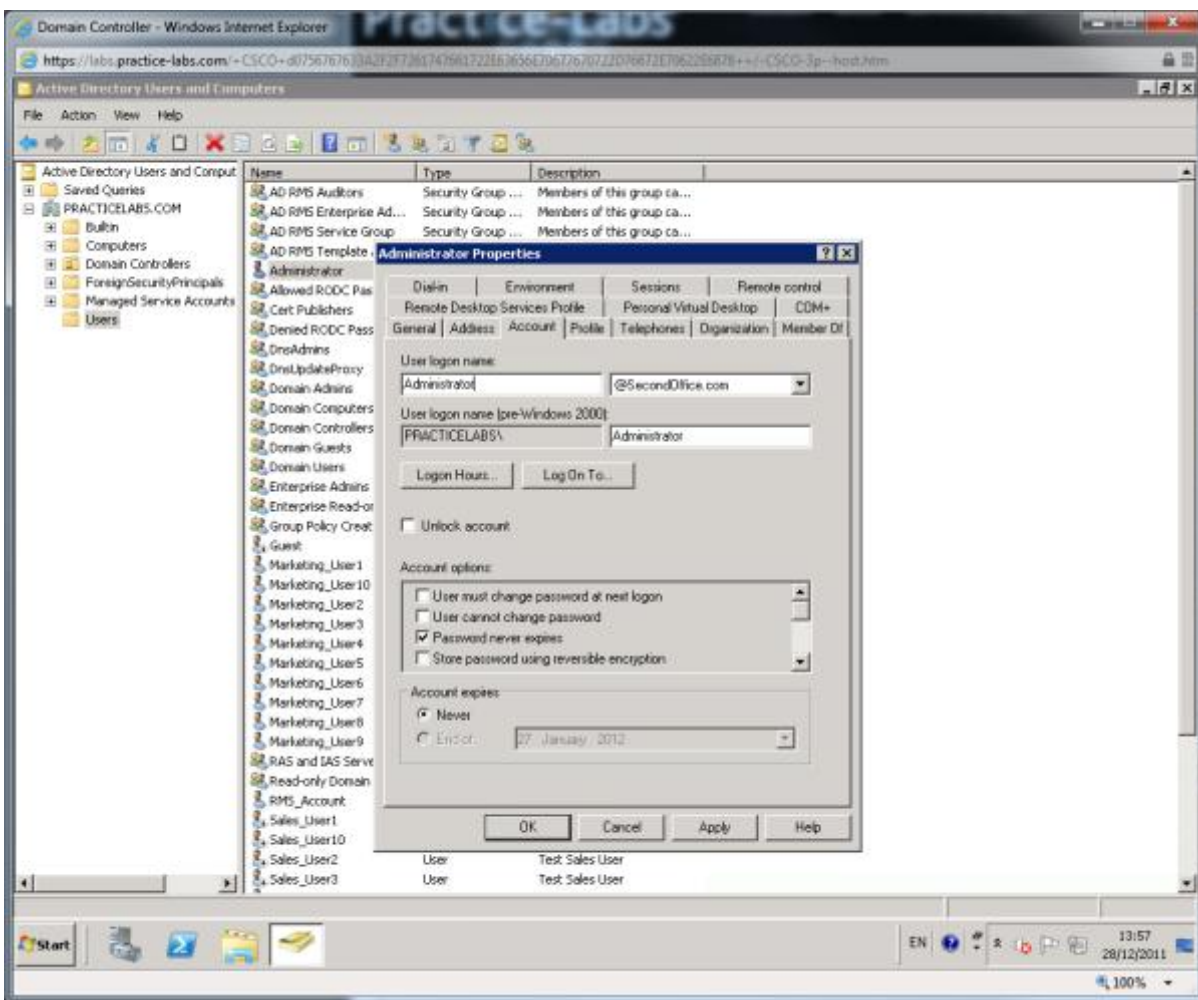
Create a new UPN suffix called **SecondOffice.com** from the **Active Directory Domain and Trusts** administrative console.



### Step 5


Assign the new UPN to the **Administrator** account properties. Then launch access to and logon to the **Domain Server** with the following user account details **Administrator@SecondOffice.com** with a password of **Passw0rd**. You will need to uncheck the Auto Login setting on the Practice-Lab window in your browser, this can be found just under the server icons.






**Practice-Lab** help ▲ ▼ ×

**Windows Server 2008 Active Directory Practice-Lab**








**Standalone Server**

Current state: On  
O/S: 2008 R2  
Username: Administrator  
Password: Passw0rd  
Auto login:  

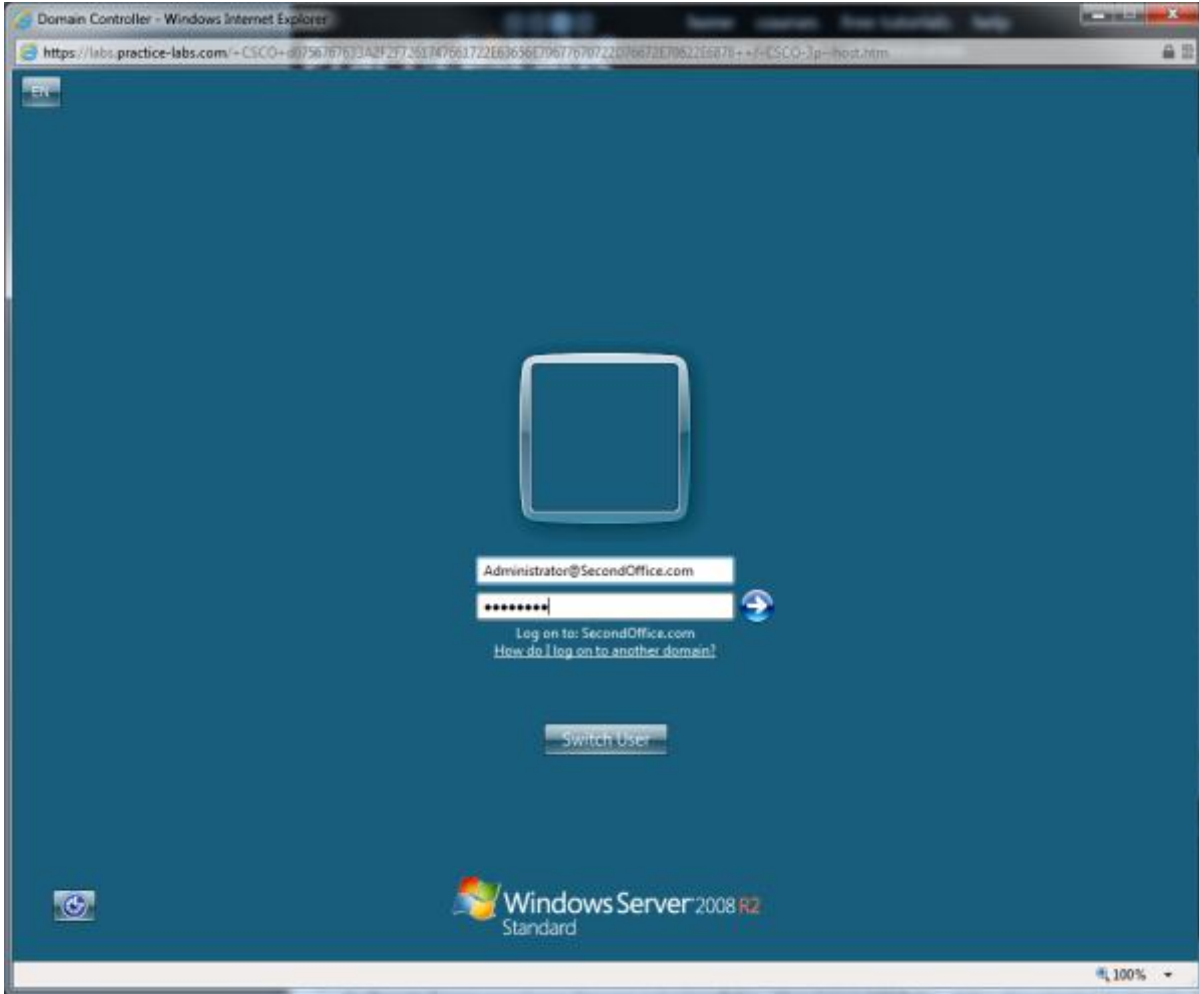
Window size: w1024 h768 ▼

**Available functions:**

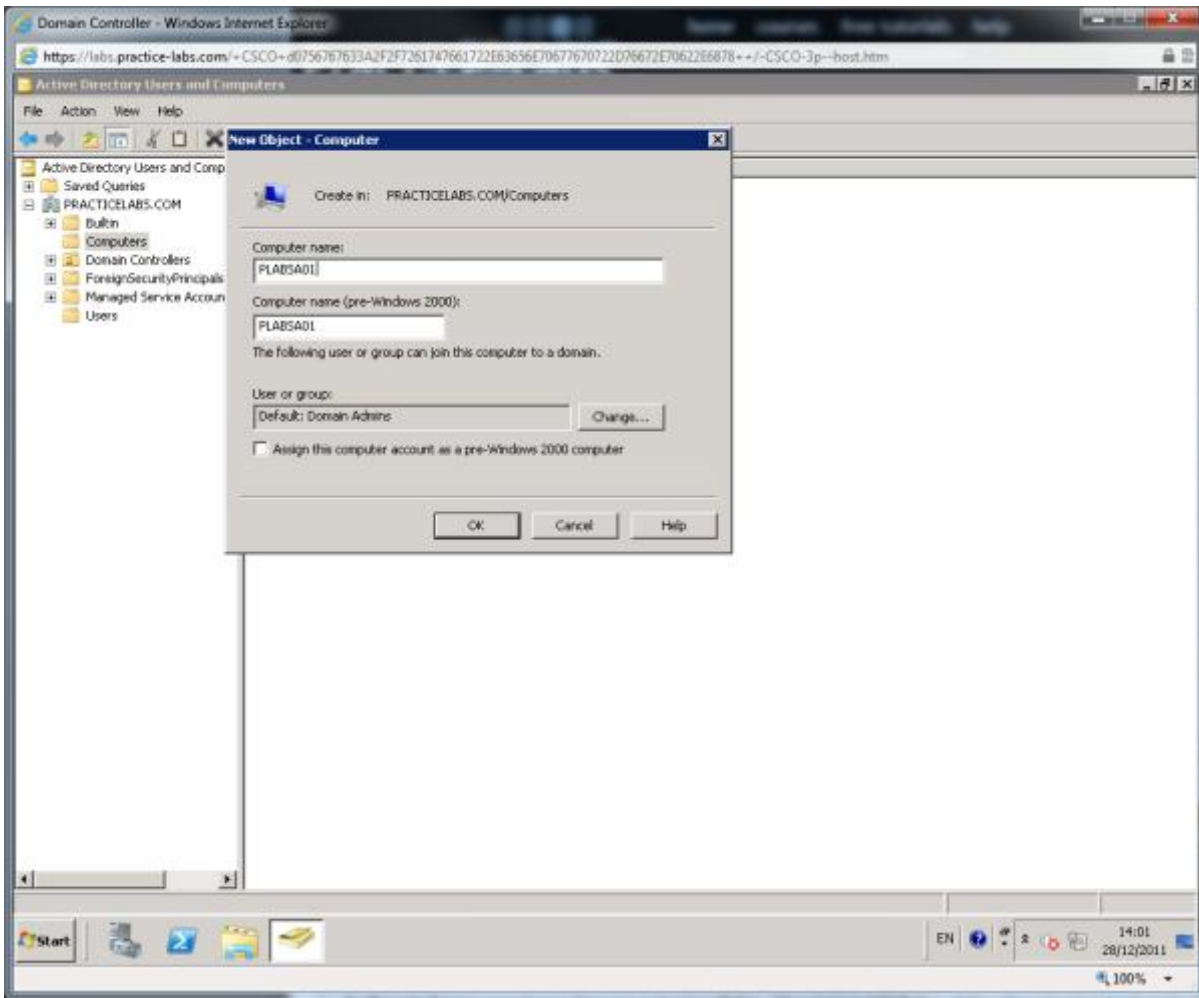
Off Suspend Reboot Reset connect

**Additional tools and information:** ▲ ▼



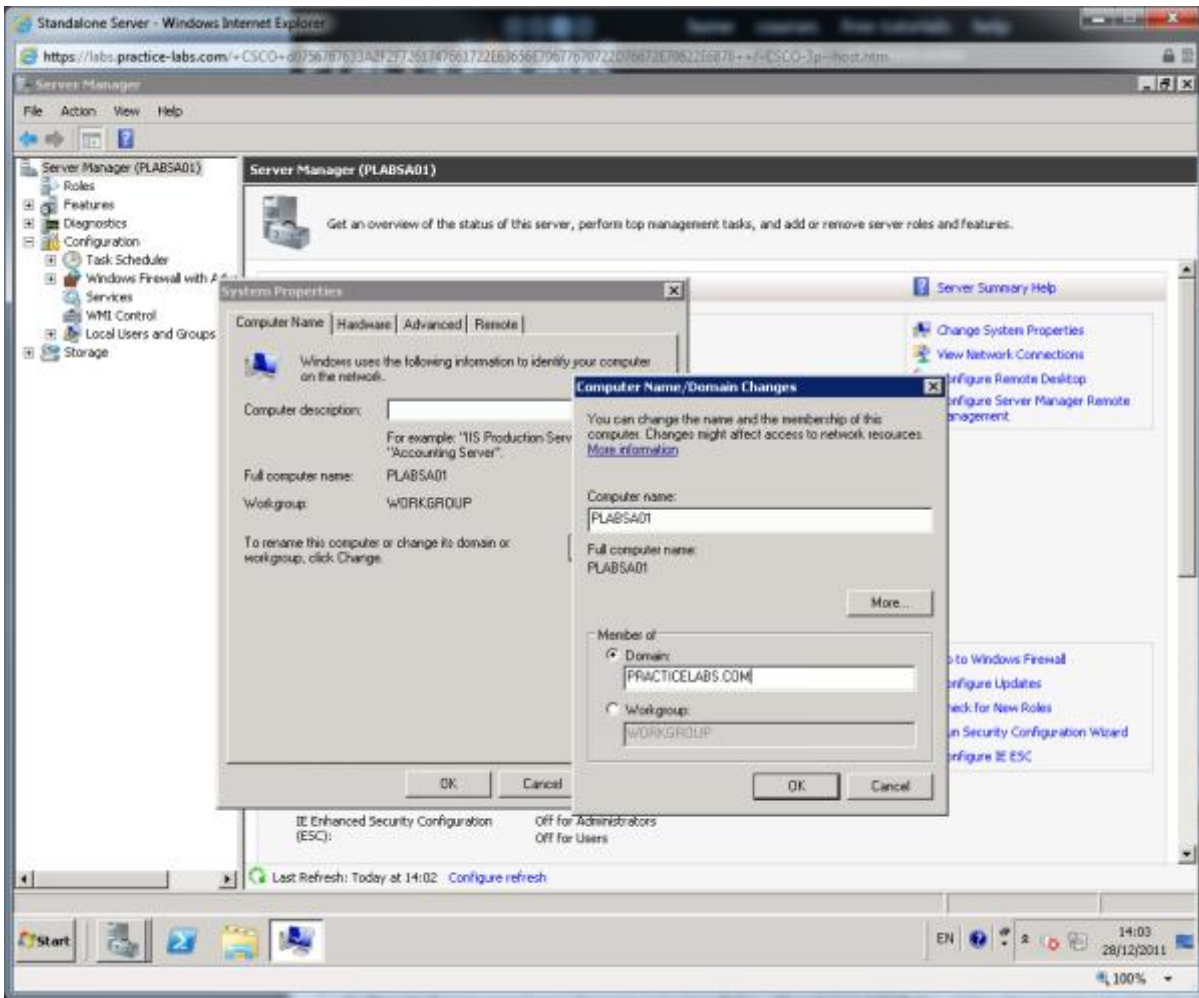
### Step 6

Create a new computer account using **Active Directory Users and Computers** console called **plabsa01** on the **Domain Controller**

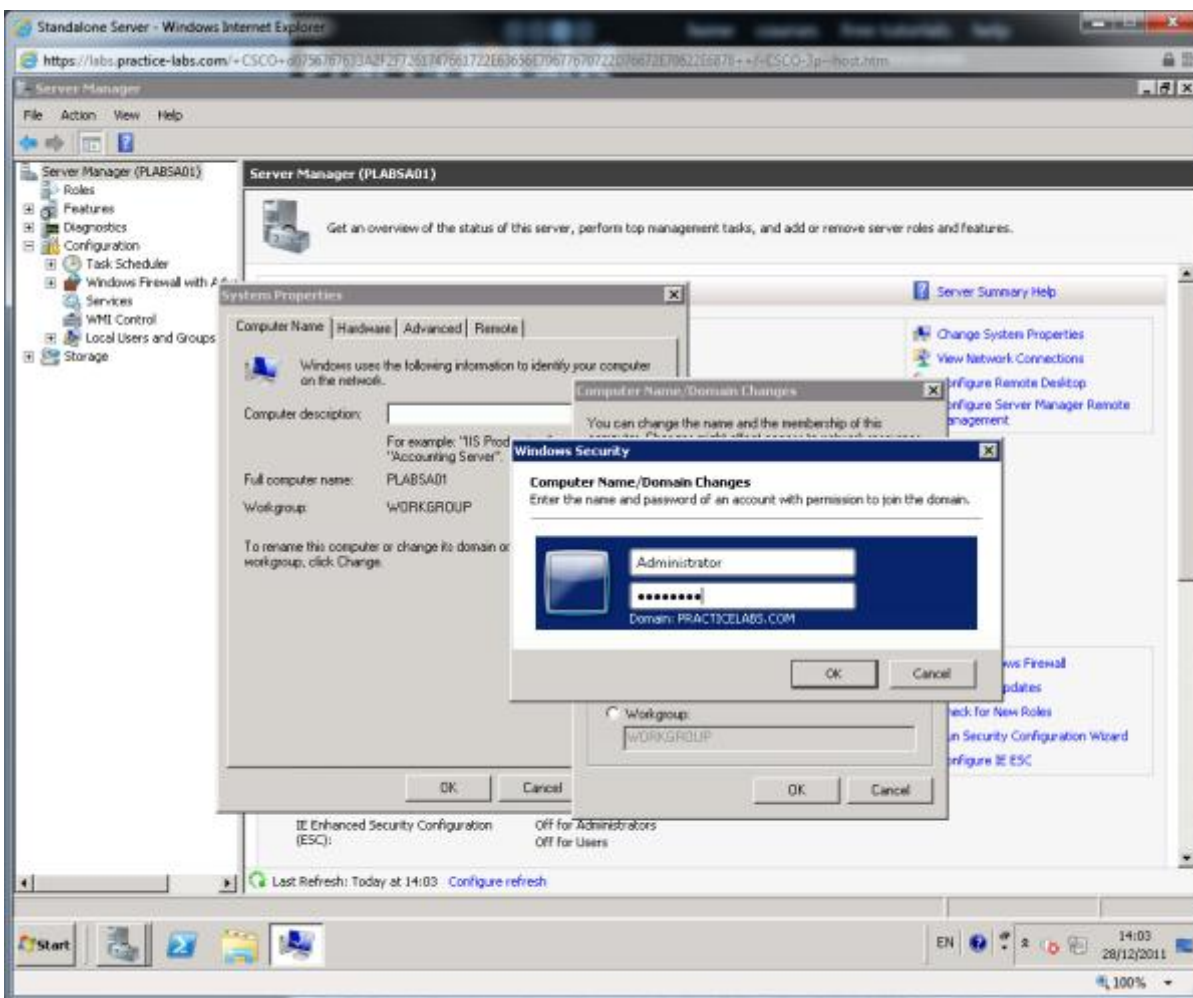


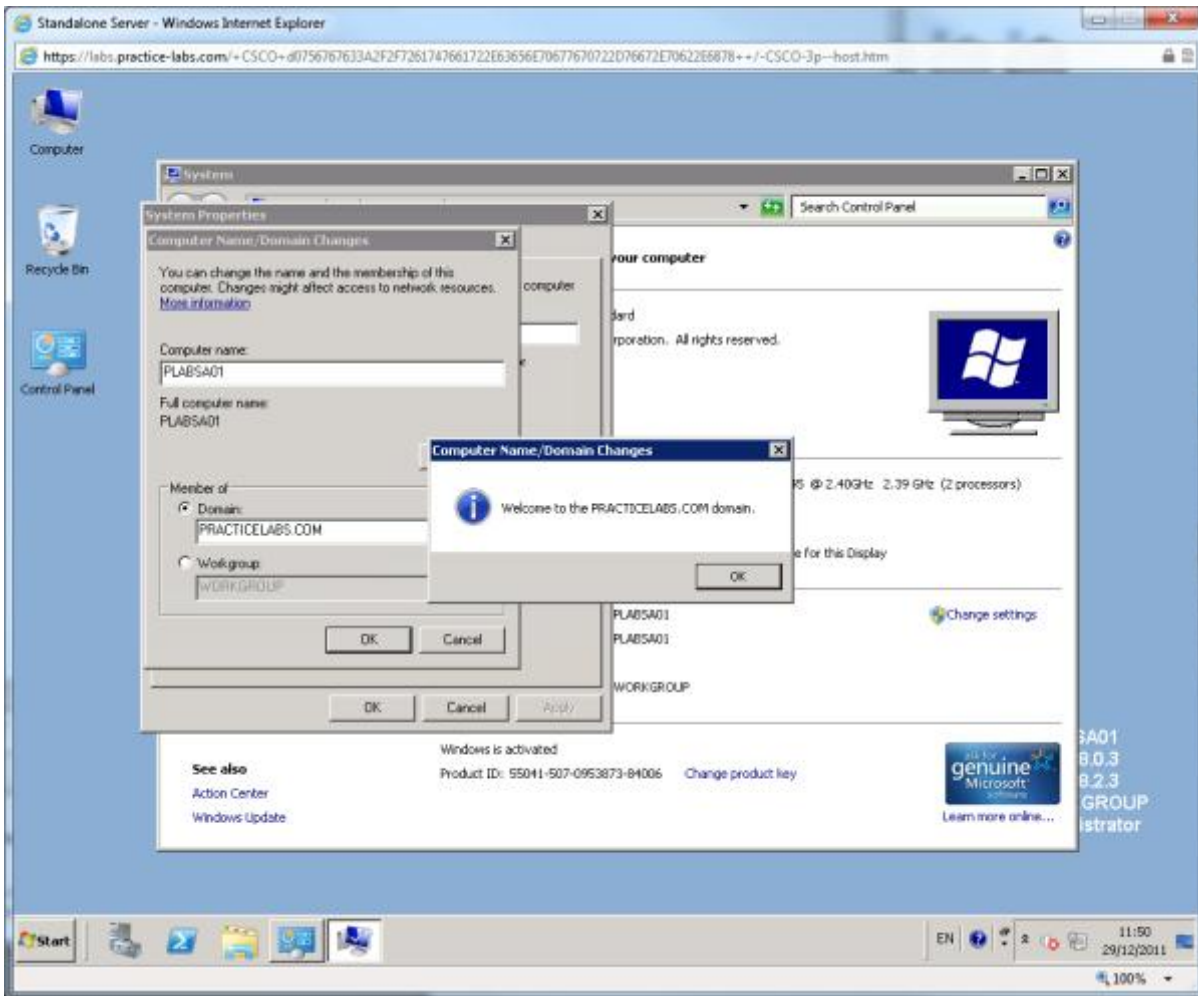
## Step 7

Launch access and logon to **Standalone Server** where you should join this server to the domain.



Enter in the domain administrator credentials when prompted.





### Summary

In this exercise you created users through automation utilities. These tools can be very effective when manipulation of a large number of directory objects is required. This process does not only save time but reduces the human error element; however scripts can be extremely destructive if not written correctly. Before using these in a production environment ensure you have tested thoroughly the impact and success of the output from the script. You also joined the Standalone Server to the practicelabs.com domain and added the computer account in AD Users and Computers.

### Also try

- Manually create new user objects.
- Create template account.
- Created contact and distribution list objects.
- Edit all user details using Idifde or vbscript.

## Exercise 2 – Maintain Active Directory Accounts

---

In this exercise you will perform the tasks required to maintain AD accounts. Please refer to your course material or view the details at <http://technet.microsoft.com/en-us/library/cc754217.aspx> [Microsoft Technet] to gain an understanding of the tools required to support Active Directory accounts.

*In this exercise you will be required to Power On and connect to the following servers from your Practice-Lab application:*

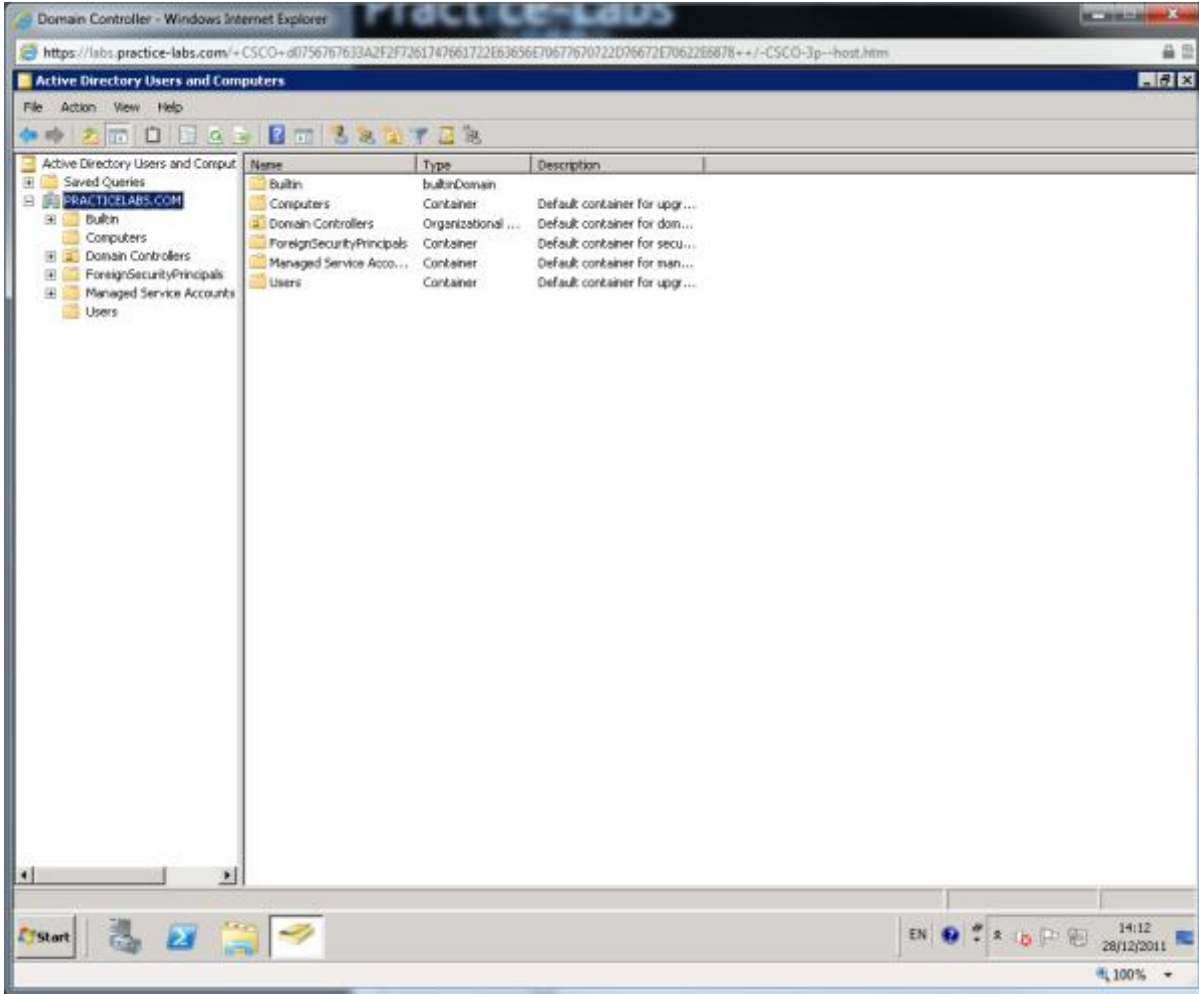
➤ **Domain Controller**

*If you are having difficulty connecting to your Practice-Lab device please refer to the <http://www.practice-labs.com/help.aspx> help or watch our connection video at <http://www.practice-labs.com/files/videos/site-tutorials/accessing-a-practice-lab.aspx> video tutorial.*

### Step 1

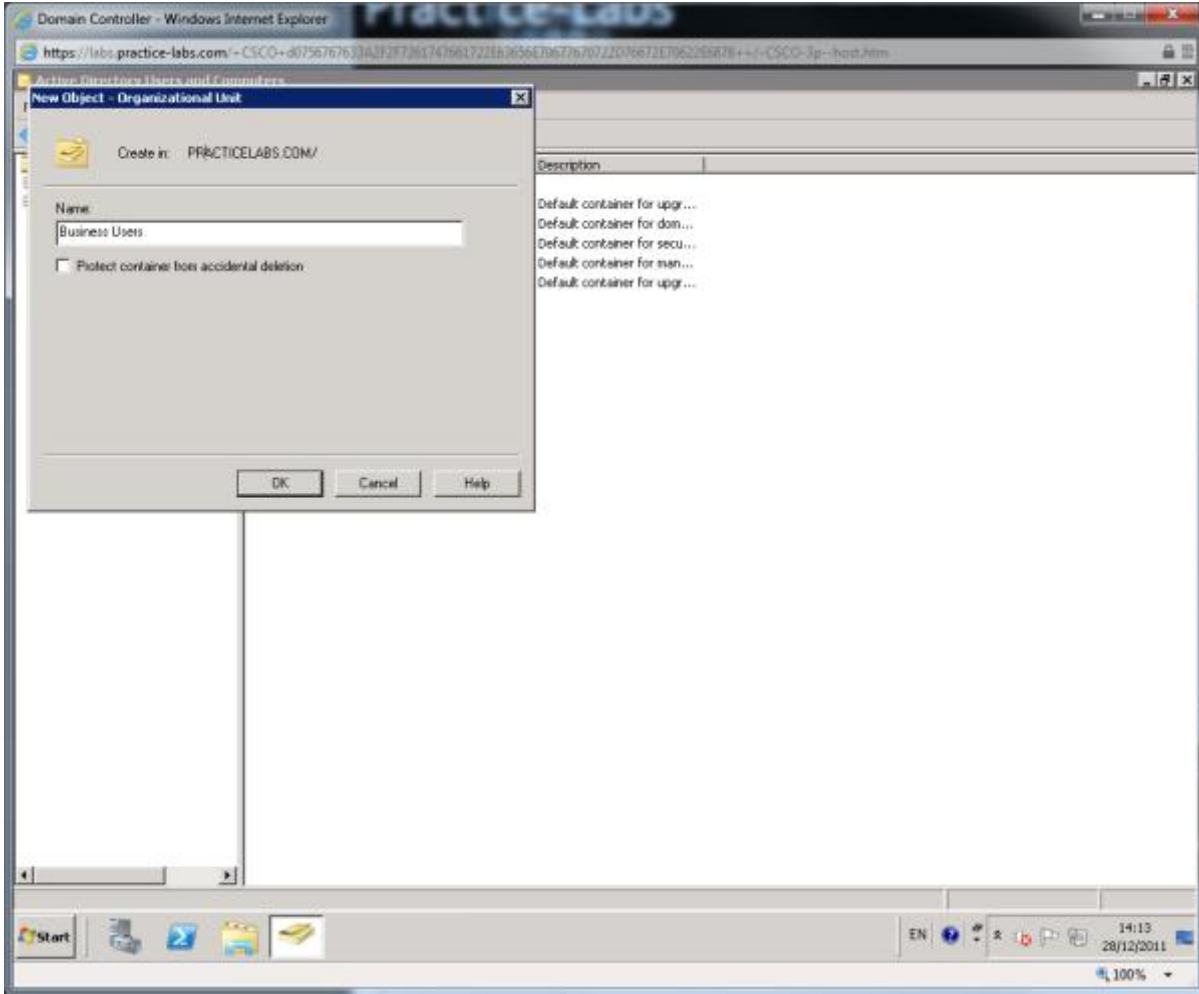
From the **Domain Controller** open the **Active Directory Users and Computers** console from Administrative tools or type in **dsa.msc** from the **Run** or **search all programs and files** utilities.

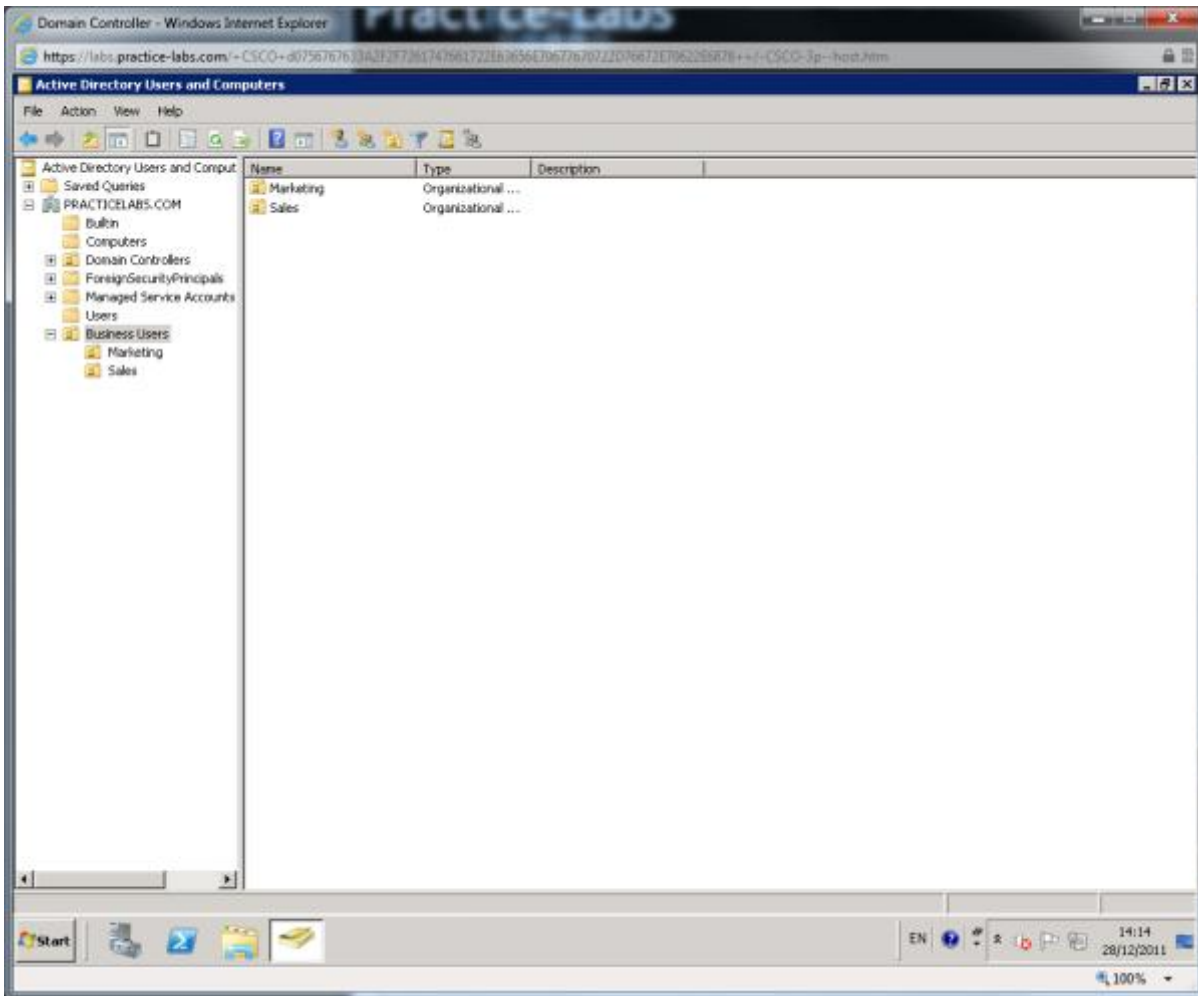




### Step 2

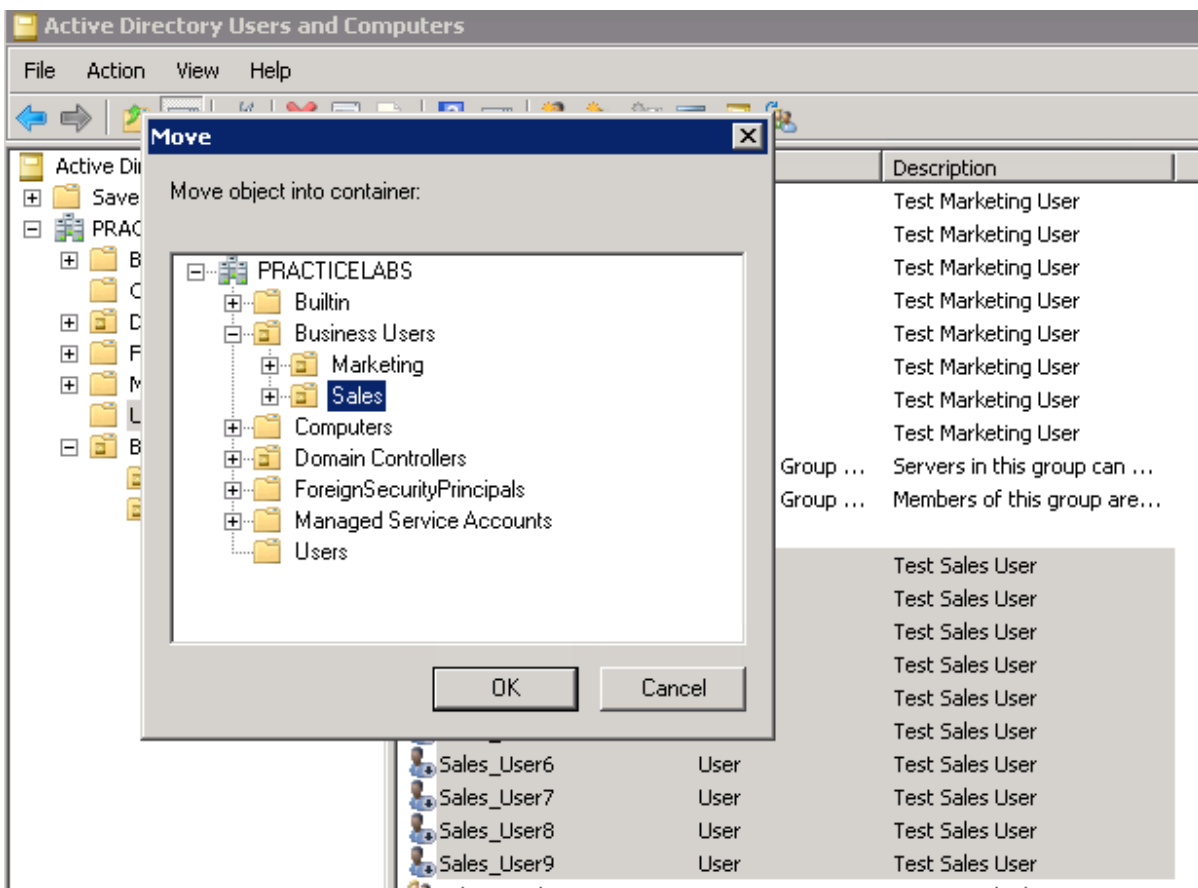
Create a new organisational unit (OU) called **Business Users** and within that OU create a further two OU's called **Sales** and **Marketing**.





### Step 3


Move the accounts from the **Users** container starting with **Sales** to the new **Sales** OU and do the same for the **Marketing** accounts. (**Note:** If you have not completed the tasks in Exercise 1 please do so now in order to complete this task)



### Step 4

Create a new Universal security group in the Marketing OU and add all the **Marketing** users to it.

**New Object - Group** [X]

 Create in: PRACTICELABS.COM/Business Users/Marketing

---

Group name:

Group name (pre-Windows 2000):

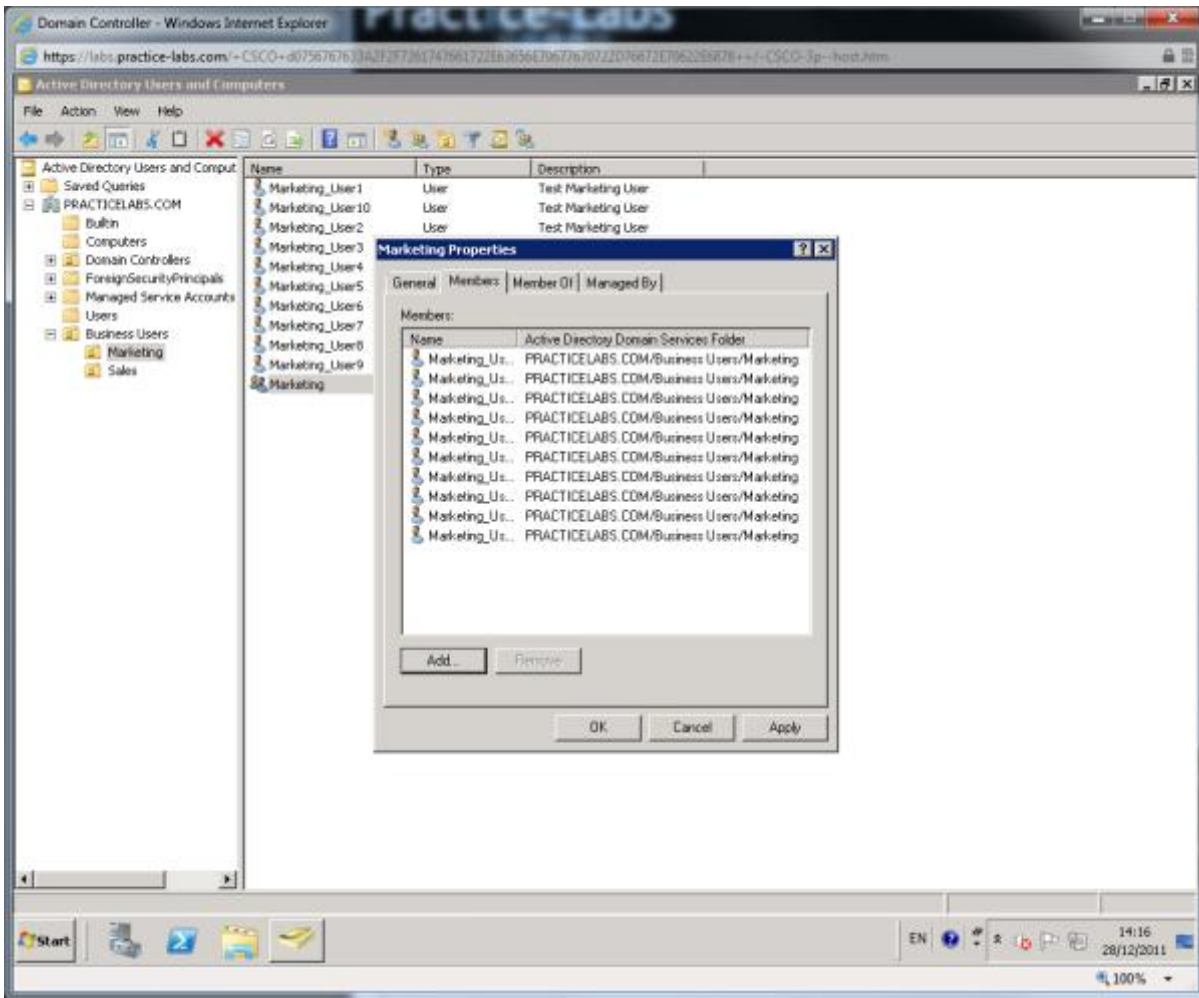
Group scope

- Domain local
- Global
- Universal

Group type

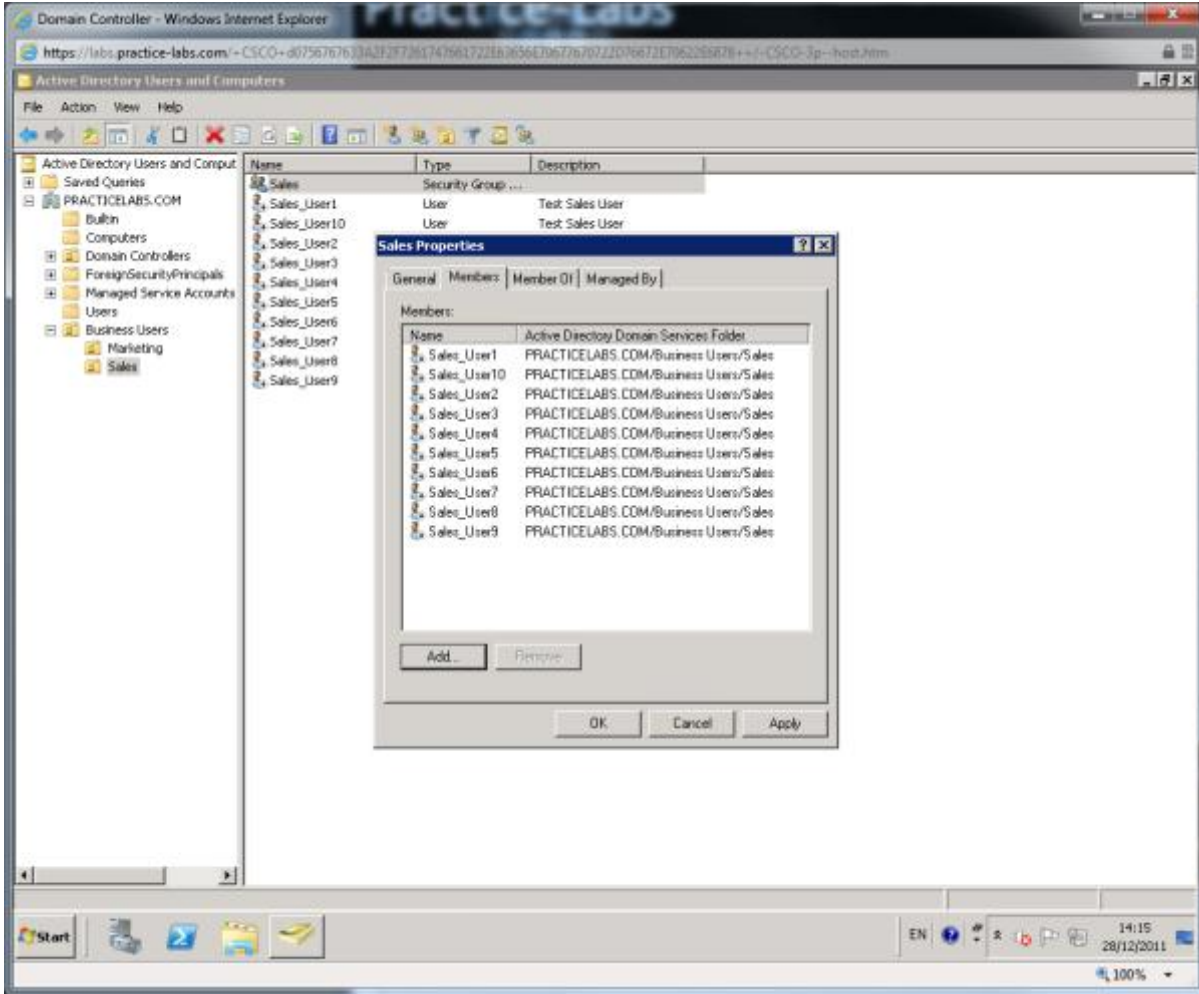
- Security
- Distribution

---



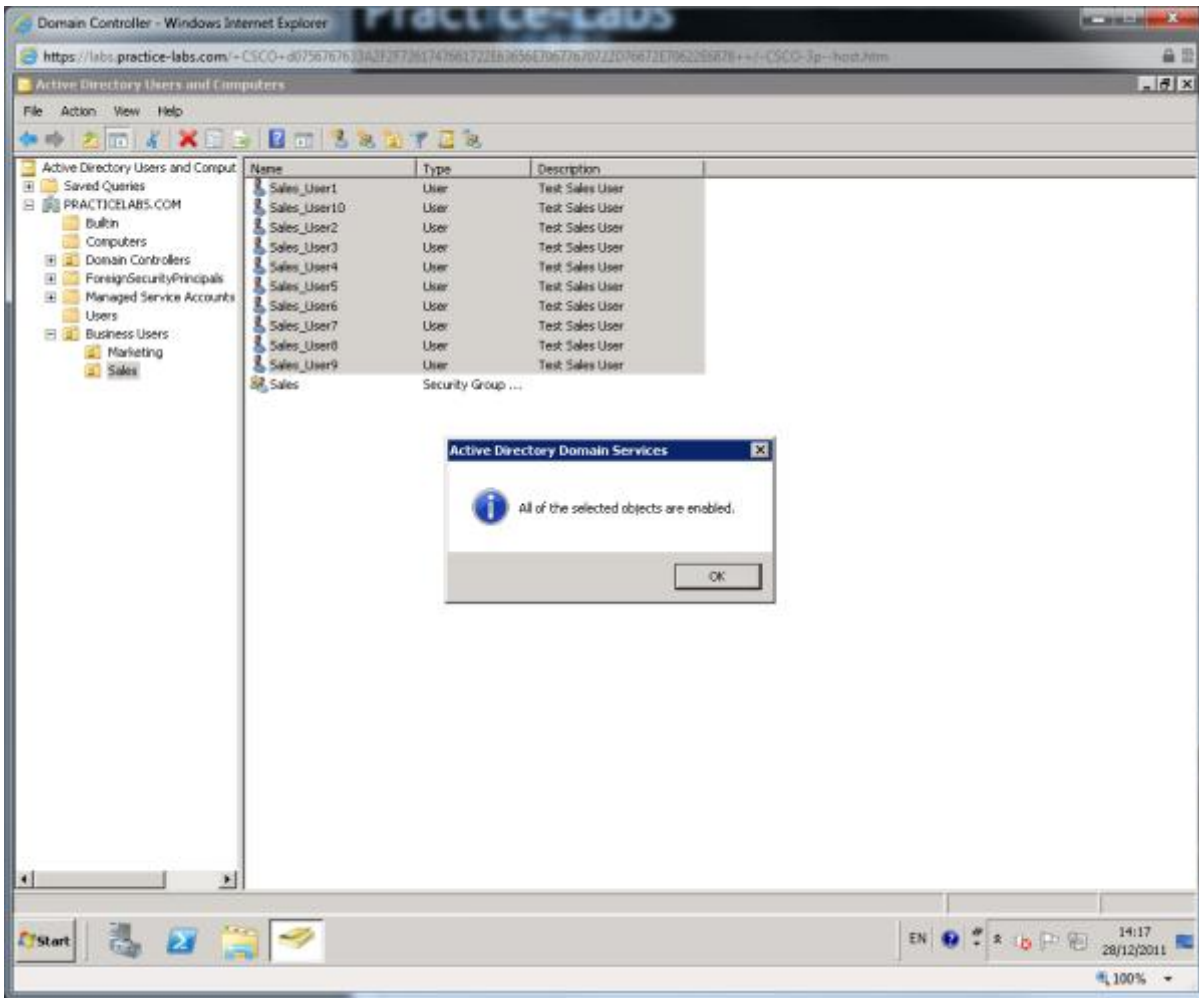
## Step 5

Create a new Global security group in the Sales OU and add all the **Sales** users to it.



### Step 6

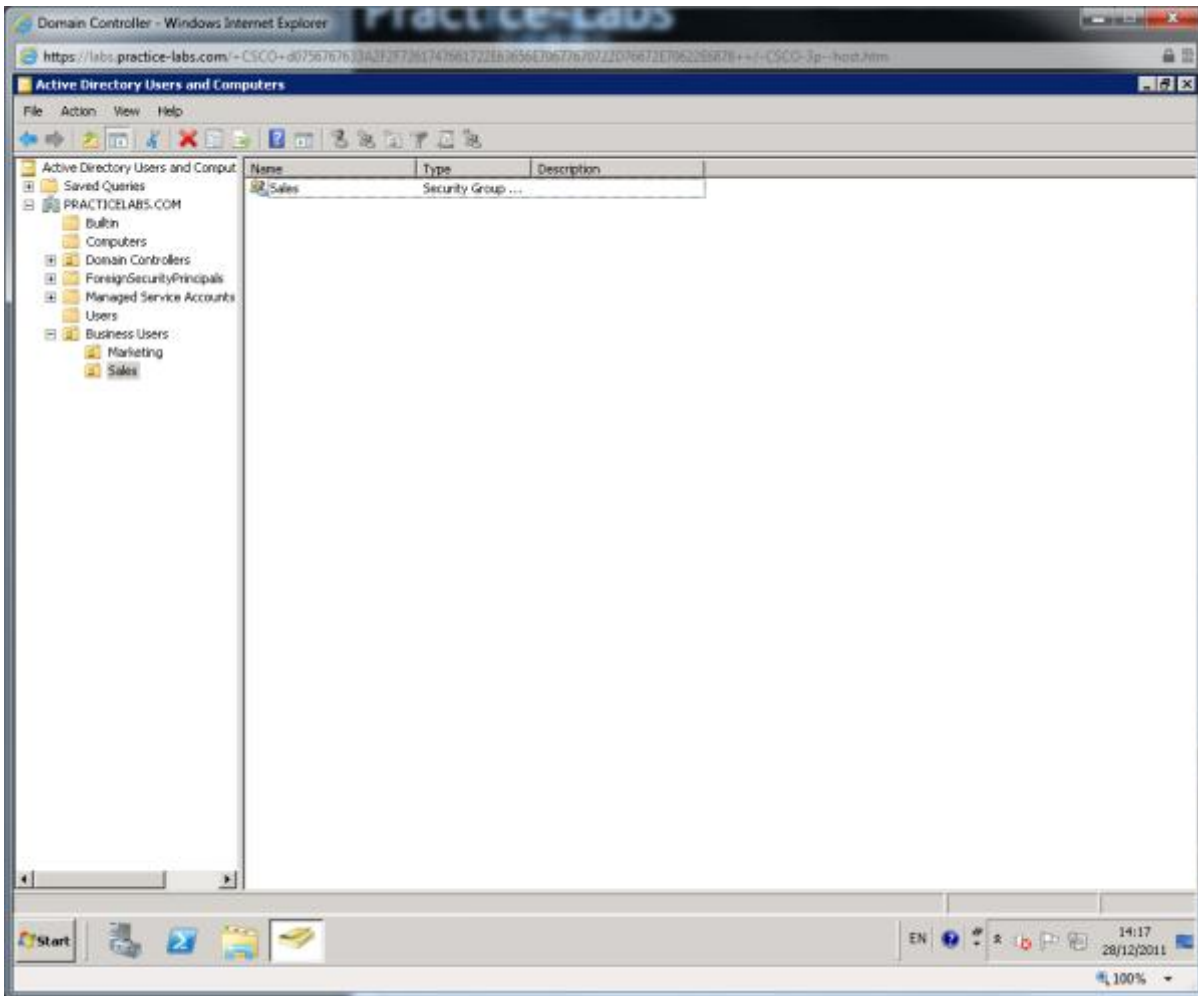
Enable all of the **Sales** user accounts and disable **Marketing** user accounts. This can be done manually; alternatively use the utilities from Exercise 1 to achieve this.



### Step 7

Delete all of the **Sales** users from Active Directory.





### Summary

In this exercise you managed Active Directory accounts using the relevant administrative console. This is where most of the day to day user administrative tasks take place and the logical structure of your Active Directory structure is created and maintained.

### Also try

- Manage computer account in Active Directory User and Computers.
- Delegate control to an OU for a specific group.
- Reset user account passwords.